

Le MERIDIEN CHAMBERS MINNEAPOLIS

Burnet Gallery Enlivens Winter with Bold, Colorful, Complex, “A Moment Stays”

Artist, Drew Peterson’s Solo Exhibition Opens Jan. 13

OVERVIEW:

- “A Moment Stays” solo exhibition by Drew Peterson
- Burnet Gallery, Le Méridien Chambers, 901 Hennepin Ave., Minneapolis, Minn.
- FREE Opening Reception 6-9 p.m., Fri., Jan 13.
- Exhibition runs through, Feb. 26, 2011
- Gallery hours are 11 a.m. to 9 p.m. daily

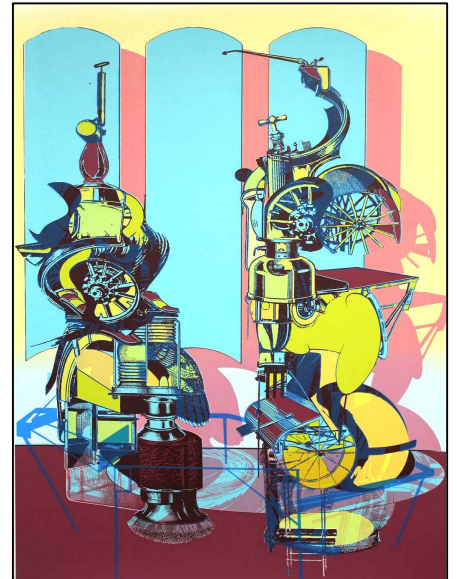
MINNEAPOLIS – Opening Fri., Jan 13 through Feb. 26, “A Moment Stays” is an exhibition of more than 20 silkscreen prints, off-set lithographs and small mixed-media paper sculptures by Minnesota native, Drew Peterson.

Both futuristic *and* nostalgic,” Peterson’s colorful prints draw from a rich historical mix of print making influences including Ukiyo-e, a style of Japanese woodblock prints and early Impressionist lithographs. The results are bold, complex and captivating.

The use of color is at the foundation of many of Peterson’s pieces. But each artwork is iterative, evolving and devolving from a variety of elements including appropriated drawings from early 20th century ads that Peterson layers, builds and manipulates while incorporating strong color to arrive at a final image. The end result is a vaguely retro quality difficult to pinpoint or define.

The pieces in the show range from mildly literal to completely ambiguous. In Peterson’s “Uprights” two sculptures appear in a room together. The connection between the two is not fully defined and leaves it to the viewer to fill in the nature of the relationship.

“Bouquet” is Peterson’s homage to *ikebana*, the Japanese art of flower arranging, which emphasizes form, color and composition and man’s relationship with nature. A collection of images are composed above a larger object to create a virtual flower arrangement in a vase.



In contrast, Grappa is ambiguous. A form comprised of several smaller forms that appears to float against a color-blocked undefined space – an abstract collection of color, form and composition.

Drew Peterson is a multidisciplinary artist from Minneapolis. He received a BFA from the University of Minnesota in 2009, and has studied at the Yale/Norfolk Summer School for Art, and the San Francisco Art Institute. He is currently a MFA Candidate at the School of the Art Institute of Chicago.

Peterson spent time as an assistant printer at Highpoint Center for Printmaking and Vermillion Editions, and has taught screen printing at Highpoint and Juxtaposition Arts in Minneapolis. His work transitions between printmaking, collage, painting, and large-scale painting installation.



Peterson is the recipient of Trustee Fellowship at the School of the Art Institute of Chicago, and a 2010 Artist Initiative Grant from the Minnesota State Arts Board. He has participated in the Community Supported Arts Program in 2010 and the emerging printmaker's residency at Anderson Ranch Art Center in 2009.

Peterson's Solo Exhibition, *A Moment Stays*, at The Burnet Gallery is made possible through an Artist Initiative Grant from the Minnesota State Arts Board.

Burnet Gallery is a commercial gallery featuring local, national and international contemporary artists with new shows roughly every six to eight weeks. The Gallery is located in Le Méridien Chambers, an award-winning art hotel located in downtown Minneapolis.

Considered one of the top boutique art hotels in the world, **Le Méridien Chambers** features more than 250 pieces of original contemporary art throughout the public areas as well as the hotel's 60 guest rooms. Located at 901 Hennepin Ave., Minneapolis, it offers a unique combination of art, culinary, design and true boutique hotel experience. For reservations, call: 612-767-6900 or visit: www.lemeridienchambers.com/art

#

Contact:

Jacqueline Hanson
Hanson Communications
952-941-3949
Jacqueline@HansonPR.com

Editor's Notes: Hi-res and additional images are available upon request.

Inset images in order of appearance:

- *Uprights*, Drew Peterson, 2011 screen print 30"x22" edition of 5
- *Bouquet*, Drew Peterson, 2011 screen print 43"x 33" edition of 4
- *Grappa*, Drew Peterson, 2011 screen print 30"x22" edition of 5